



AR.Co. | Architectural Studio "Presentation"

For other informations please visit Our Official Website <http://www.arcostaff.com/> | <http://www.d-recta.it/>

Our company is build up of professionals with different technical backgrounds, who form a multi-disciplinary team. "Lateral approach" to any problem is our indispensable characteristic for the edevelopment of what we call "Urban Management", which we mainly split into 2 fi elds:

development and creation
management and consolidation

Our clients are both public and private, considering that the public- private sphere is becoming more and more interconnected. Deep knowledge of processes and the ability to articulate innovative actions is our best presentation. Our ability in process management is confi rmed by the articulation of our professional network of italian and international partners.

Countries in wich we operate

Italy, Russian Federation, Moscow, Tagikistan, Kurdistan, Bulgaria , Romania, Belgium, Croatia, Slovenia, Portugal, Capo Verde.

Our services

Complex programs management, Environmental planning, Technical consultancy for value creation, Valuation & technical due diligence, Project management



Park City project (Moscow)

Introduction

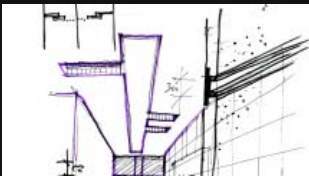
Park City, is aimed to provide top-of-the-market housing and commercial accomodations in one of the most strategic areas in Moscow. It develops along the Moscow river on a straight axis to the Cremlin, and it is bounded in the southern side, by Kutuzovsky prospect. Area C, includes buildings K6, K7, K8, and it plays a huge role in the urban composition of the Park City Masterplan: it represents, in fact, the Main Gate to the whole site.

Our Proposal

Our proposal for The Project planned for the new "Park City" in Moscow raises three Architectural issues: 1) How to conceive a new residential area compatible with the public and the private, able to enjoy and participate with harmony in the design and in the life of the green boulevards (zone D). 2) How to transform unique heritage buildings in high quality construction able to represent a mix of technological, commercial and business center with cultural areas, always connected with excellent views of the river and the social life of the diagonal(Zone I). 3) Develop a new landscape design interacting with the existing buildings improving the pedestrian and visual relations between the boulevard, the diagonal and the water front.

Concept

The aim of linking the new Park City Area, turns into this concept-propose: buildings follow an in-line continuous facade, featuring contemporary elements even if with traditional materials. Volumes show at the same time an irregular pattern and a continuous front. Elevations toward the Boulevard are developed with setbacks at level +1 and level +8, as outlined in the Masterplan: the perspective view confirms how the alignments of the setbacks of all the buildings facing the Boulevard, can give huge strenght to the front elevation.





San Leonardo (Università di treviso)

Project

Restoration of existing building in the historical centre for Public University.

Project: Arch. Franco Tomasella

Client: Fondazione Cassamarca

Concept design: Arch. Portoghesi

Total cost: \$35.000.000



Business Park (Moscow)

Projects

Coordination

Coordination and integration of the architectural design of office complex on behalf of CODEST International Ltd. and ABD Moscow.





Medical Center (Moscow)

Coordination

Coordination and integration of the architectural design of office complex on behalf of CODEST International Ltd. and ABD Moscow.



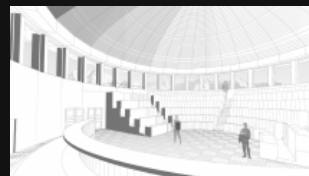
PALACE OF THE NATIONS (Tajikistan)

Project (2002)

Tajikistan Government.

Building cost:\$80.000.000

Constructor:CODEST





Vertigo Palace

The Project

The action involves a central area of Lignano Sabbiadoro is located between Via Cividale and Latisana and so called "Jo Jo" used in the past for activities and games. The particular location of proximity to the promenade and piazza fountain suggests the redevelopment area as a function of the urban setting overlooking Via Latisana. Looking at the area from Avenue fountain square and Via Codroipo is natural to think of a fifth at the end of the compositional perspective characterized by the buildings 'high' line the street front. The main body of the "tower" will feature horizontal and vertical lines that make up a geometric texture achieved through the railings "lacquered" sunshade panels and metal shading to the wings with the rhythm of the terraces cantilevered glass. The order of coverage was emphasized by metal structures shaped vaguely reminiscent of the sinuosity of "sea wave". The quality of finish is expressed through the use of precious materials such as brick Sannini, the continuous vetrofacciate uprights with no view, the glass curtain walls of the terraces and not least, the panoramic lift facing the lagoon. Particular attention will be given to the system of night lighting and flooring finishes respect of the parts facing the public streets.



Tim Libris Towers masterplan (Timisoara)

Project & Masterplan

Masterplan in Moldova, logistical and residential area. Concept design of the complex and photo-realistic still-frame .

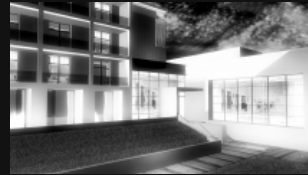




Gelendzhik Area (Gelendzhik – Russian Federation)

Project (2004)

The action involves a central Gelendzhik in Russia. The main area, a hotel, will be the center of a series of pools with bar service and fifty rooms. The houses "cottage" will benefit from the services of this hotel and the quality of finishes is expressed through the use of quality materials. The order of coverage was emphasized by the form polyhedral structures. Particular attention will be given to the system of night lighting and flooring finishes with regard to the "green zone".



Villas

Examples of our best projects



Abramovič Luxury House (Moscow)

Concept design

Important House and the highest value, located in a great area. Luxury interiors and highest classic style, indoor pool, guest house, golf club house, outbuilding etc. More than 20,000 square meters of park with private golf course.





Gary House (Moscow)

Concept design

Luxury house with natural forest facing the city of Moscow. The facade of the villa will be built in limestone and mahogany, to take account of the environment and meet the high quality standard set by the customer. The materials used for both the exterior and the structure are at hand for the technological needs of thermal insulation required by the extreme climate, while achieving an excellent aesthetic balance.



De Zan House

Project

Important properties of merit located in a panoramic position. Reality luxurious and furnished in classic tone, composed of villa with outbuilding etc..



Modern Cottage in Moldavia

Project

Important properties of merit located in a panoramic position. Reality luxurious and furnished in modern tone, composed of villa with swimming pool. Everything is bathed in 2,000 sqm of relevance.



Faso House (Burkina Faso)

Private House

The style "ultra" generates the contrast between the continent where human life originated, and the modern style and technology with the aim of safeguarding the environment through energy conservation and work towards the future.



Zanussi residential building

History

The intervention area covers the industrial settlement of Zanussi currently in disuse. And 'situated between the historic city center of Conegliano, near the railway line and between the main road that connects Alemagna south-west and north-east Venezia Belluno. The area is bordered to the south-east of the river is Monticano and the arrival from the south to the town of Conegliano. The project considers the recovery of the part of the building's most significant architectural value of the entire complex, the former foundry, as a testimony of the historical memory of the place. Similarly it is expected to restore those parts of the masonry buildings in the complex located adjacent to the channel Zanussi Ruia as integrating industrial archeology all'inetrno the urban park planned in this area.

Integrated Urban Redevelopment Plan

The redevelopment will enhance the site and the landscape of the place, describing a new urban development that emphasizes and interacts with special preferential views over the city and hilly system that serves as the backdrop. The destinations are harmoniously inserted in the residential development plan which provides for an organization in areas defined as "Villages" and a plurality of functions (services, business-directional, spaces for collective use, administrative and cultural center, in addition to the residence). The new settlement is built on visual cones from every part of the permit on the Acropolis overlooking the hills and defined mainly by the castle and the neoclassic villa Japelli, thereby indicating a predominant development of buildings in a north-south and thereby reaching the optimum orientation east-west. As part of the redevelopment project is expected to converge on an area in which the most important public functions: the new town hall, an auditorium and a large square, created from the renovation of an existing building, the former foundry, as a testimony to the collective historical memory of the place.





Condominium (Burkina Faso)

Progetto

The complex, which includes a part for residential and one commercial, is located in the new residential area. The basement space is a refined and exclusive night club on the ground floor commercial space is planned with large windows, facing the road that connects the old with the new city center, on the upper floors will be built premises used as offices and luxury , and as luxury apartments. The style of the building represents the taste of the new generations that are forward-looking, but respect their cultural roots. The materials are provided with high thermal insulation and have been carefully chosen to combine modern technology with traditional style of the country.



Residential building

Project

The design concept provides a volumetric reconstruction of the residential building by demolishing and rebuilding existing volume with the recovery of the residential apartment in a new organism that grows in height, in line with the surrounding buildings, leaving more room for green earth. The new building consists of a main body on which are grafted two "wings" lowest slightly inclined to allow a good reading of the volume from the narrow perspective of the access road. The finishing materials are traditional with the exception of titanium zinc roof and some steel and wood accents on the cut of the stairwell and on balconies protruding.



Residential building

Project

The design concept provides a volumetric reconstruction of the residential building by demolishing and rebuilding existing volume with the recovery of the residential apartment in a new organism that grows in height, in line with the surrounding buildings, leaving more room for green earth. The new building consists of a main body on which are grafted two "wings" lowest slightly inclined to allow a good reading of the volume from the narrow perspective of the access road. The finishing materials are traditional with the exception of titanium zinc roof and some steel and wood accents on the cut of the stairwell and on balconies protruding.



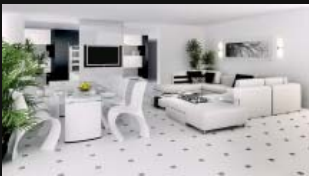
Various Villas

Examples of our various projects



Interior design

Examples of our best projects



Industrial design

Examples of our various projects





Franco Tomasella

Architect and Interior Designer

Graduated in 1986 at the university of VENICE. The professional career has been developed in architectural and urban planning. Member of d-recta, founded in 1990 and AR.CO studio .through which establishes a network of collaborations on topics of considerable importance in design collaboration with illustrious colleagues (Paul Portuguese - Mario Botta - Goncalo Byrne). The activity, in synergy with d-recta, is developed mainly in Italy and the Russian Federation, Moscow. In particular, making important construction works of large size and develops work experience with Russian, English and American design studios (2 Mosproject - NBBJ - International Korda - KPF London).

A handwritten signature in white ink, reading "Franco Tomasella". The signature is stylized and cursive.